

Sponsored by: Puto

**CITY OF MARATHON, FLORIDA
RESOLUTION 2007-57**

A RESOLUTION APPROVING A REQUEST FOR A FINAL PLAT APPROVAL, AS SUBMITTED BY JOHN LAKES POINTE II, LLC, FOR A PORTION OF THE PALMS SUBDIVISION LOT 1, BLOCK 6, LOT 2 BLOCK 6, N ½ LOT 11 BLOCK 1, S ½ LOT 10 BLOCK 1, N ½ LOT 10 BLOCK 1, N ½ LOT 9 BLOCK 1, S ½ LOT 8 BLOCK 1, 50FT LOT 5 BLOCK 1, SECTION 6, TOWNSHIP 66 SOUTH, RANGE 33 EAST, KEY VACCA, MONROE COUNTY, FLORIDA; HAVING REAL ESTATE NUMBERS 00104440-000000, 00104440-000100, 00333110-000000, 00333120-000000, 00332790-000000, 00332770-000000, 00332760-000000, 00332740-000000, 00332740-000000, AND 00332730-000000; AND PROVIDING AN EFFECTIVE DATE

WHEREAS, the Applicant is requesting Final Plat approval to subdivide and reconfigure the parcel boundaries of the existing lots to include the large parcel to the west; and

WHEREAS, there are seven platted lots and two acreage tracts under this plat approval application; and

WHEREAS, the proposed Final Plat shows eight lots; and

WHEREAS, the City of Marathon (the "City") has purchased Lot 1; and

WHEREAS, the Applicant intends to construct residential dwelling units on Lots 2 through 8 pursuant to the City's Land Development Regulations; and

WHEREAS, since this is a vacation and replat of existing lots with ROGO entitlements, the existing ROGO entitlements shall be distributed among Lots 2 through 8 at a rate of one per lot; and

WHEREAS, the property purchased by the City has received 40 Affordable Housing ROGO allocations; and

WHEREAS, the project as proposed is consistent with the City's Land Development Regulations as they relate to density, setbacks, open space and habitat evaluation; and

WHEREAS, the Stormwater Management Plan as submitted is sufficient to retain stormwater on site; and

WHEREAS, existing City services located on West 105th Street provide access and utilities to Lots 2 through 6; and

WHEREAS, access and utilities to Lot 1 shall be provided by driveway directly on US 1; and

WHEREAS, Access and utilities to Lots 7 and 8 shall be provided by the recorded Access and Utility easement.

NOW THEREFORE, BE IT RESOLVED BY THE CITY COUNCIL OF THE CITY OF MARATHON, FLORIDA, AS FOLLOWS:

Section 1. The above recitals are true and correct and incorporated herein.

Section 2. The final plat, a copy of which is the attached hereto as Exhibit "A," is hereby approved.

Section 3. ROGO allocations shall be applied as follows: One (1) Market Rate Allocation to each of Lots 2 through 8 and forty (40) Affordable ROGO Allocations to City Lot 1.

Section 4. This resolution shall become effective immediately upon its adoption.

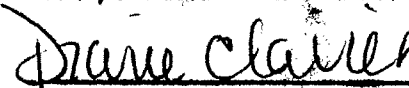
PASSED AND APPROVED by the City Council of the City of Marathon, Florida, this 10th day of April, 2007.

THE CITY OF MARATHON, FLORIDA




Christopher M. Bull, Mayor

I certify this document to be a True and Correct Copy of the original.



Dawn Clavier
City Clerk/City of Marathon



Date

AYES: Cinque, Tempest, Vasil, Worthington, Bull
NOES: None
ABSENT: None
ABSTAIN: None

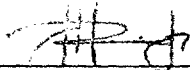
ATTEST:



Diane Clavier
City Clerk

(City Seal)

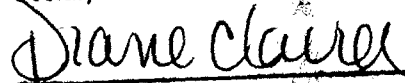
**APPROVED AS TO FORM AND LEGALITY FOR THE USE AND RELIANCE OF
THE CITY OF MARATHON, FLORIDA ONLY:**



City Attorney

MONROE COUNTY
OFFICIAL RECORDS

I certify this document to be a True and Correct Copy of the original.



City Clerk/City of Marathon



Date

LAPALMA OF THE FLORIDA KEYS

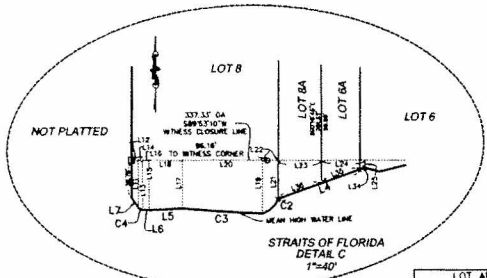
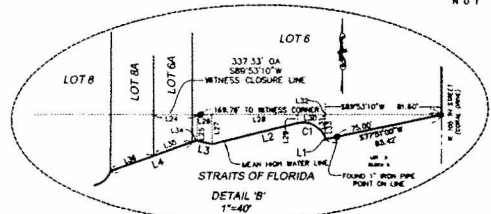
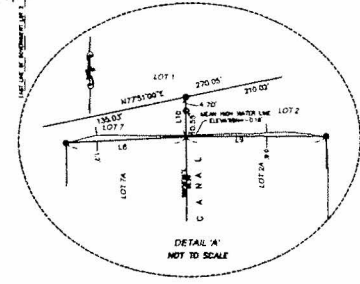
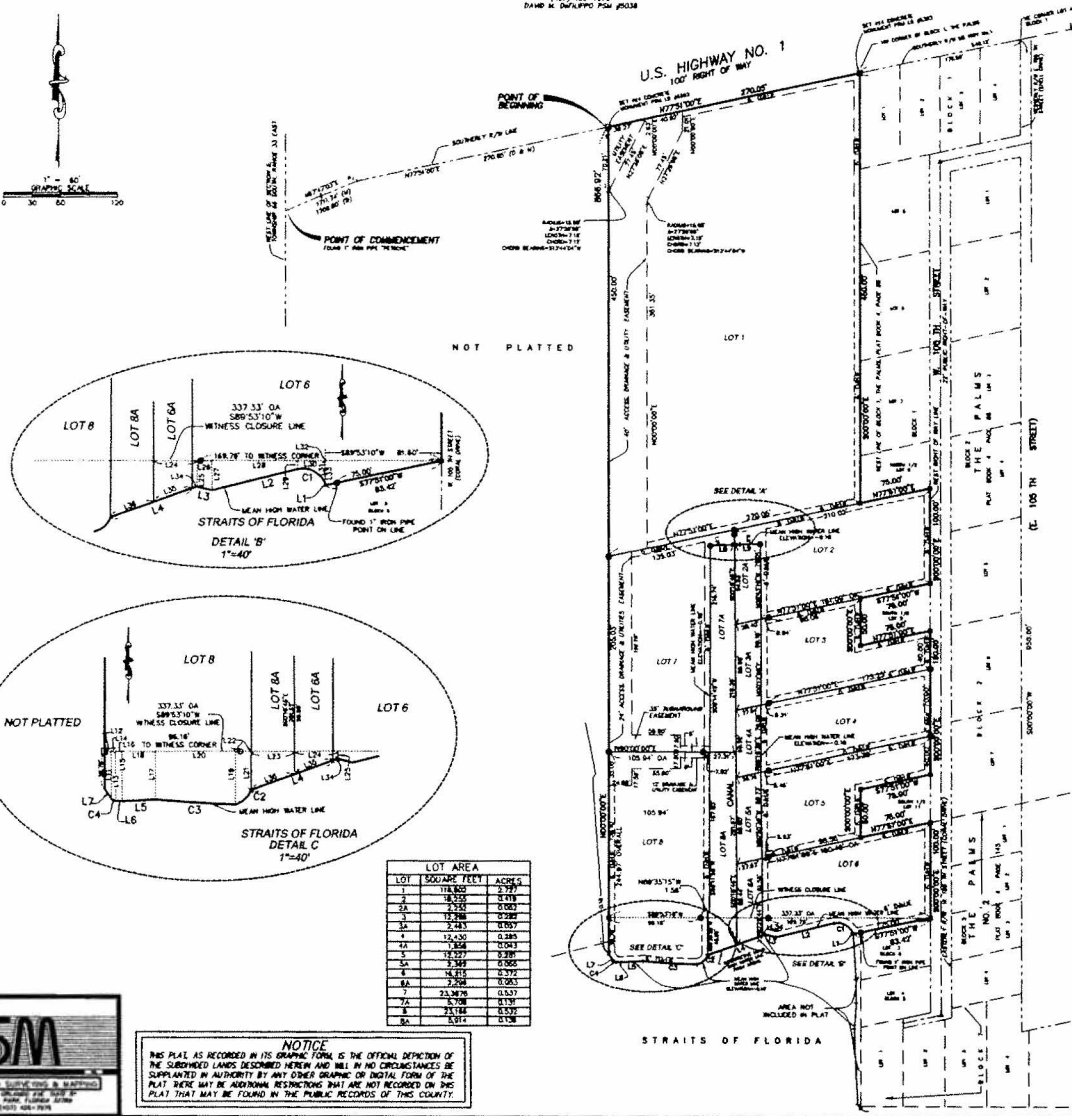
A REPLAT OF A PORTION OF LOTS 8 AND 9, ALL OF LOT 10 AND A PORTION OF LOT 11, BLOCK 1, THE PALMS (PLAT BOOK 4, PAGE 86); ALL OF LOTS 1 AND 2, BLOCK 6; AND A PORTION OF GOVERNMENT LOT 2 SECTION 6, TOWNSHIP 66 SOUTH, RANGE 33 EAST KEY VACA, MONROE COUNTY, FLORIDA.

PLAT BOOK

PAGE

SHEET 2 OF 2

AMERICAN SURVEYING & MAPPING, INC.
1000 NORTH ORLANDO AVENUE, SUITE #
WINTER PARK, FLORIDA 32789
(407) 438-7979
DATE: 04/24/2010 FILE: 01038



LOT	SQUARE FEET	ACRES
1	178,800	2.797
2	18,255	0.265
3	27,500	0.398
4	12,768	0.185
5	2,483	0.036
6	12,430	0.180
7	1,358	0.020
8	12,727	0.184
9	7,367	0.107
10	14,875	0.215
11	7,702	0.113
12	23,870	0.347
13	17,708	0.256
14	21,144	0.307
15	5,071	0.073

LINE	LENGTH	BEARING	COORD. BEARING	COORD.
L1	13.87	S84°12'00"W	S84°12'00"W	21.363
L2	15.18	S15°17'00"W	S15°17'00"W	24.741
L3	15.84	S00°00'00"W	S00°00'00"W	24.840
L4	6.00	S45°00'00"W	S45°00'00"W	24.840

LINE	LENGTH	BEARING
L1	13.87	S84°12'00"W
L2	15.18	S15°17'00"W
L3	15.84	S00°00'00"W
L4	6.00	S45°00'00"W
L5	23.57	S00°00'00"W
L6	4.55	S00°00'00"W
L7	8.20	S00°00'00"W
L8	20.72	S00°00'00"W
L9	27.32	S00°00'00"W
L10	18.22	S00°00'00"W
L11	15.02	S00°00'00"W
L12	4.22	S00°00'00"W
L13	21.12	S00°00'00"W
L14	4.12	S00°00'00"W
L15	27.22	S00°00'00"W
L16	4.12	S00°00'00"W
L17	46.17	S00°00'00"W
L18	35.37	S00°00'00"W

LINE	LENGTH	BEARING
L19	28.77	S00°00'00"W
L20	34.00	S00°00'00"W
L21	28.77	S00°00'00"W
L22	15.00	S00°00'00"W
L23	30.74	S00°00'00"W
L24	30.85	S00°00'00"W
L25	10.00	S00°00'00"W
L26	20.00	S00°00'00"W
L27	18.00	S00°00'00"W
L28	5.81	S00°00'00"W
L29	18.34	S00°00'00"W
L30	12.00	S00°00'00"W
L31	12.00	S00°00'00"W
L32	12.00	S00°00'00"W
L33	12.00	S00°00'00"W
L34	12.00	S00°00'00"W
L35	12.00	S00°00'00"W
L36	12.00	S00°00'00"W
L37	12.00	S00°00'00"W
L38	12.00	S00°00'00"W

- LEGEND:**
- ⊙ DENOTES PPM (PERMANENT REFERENCE MONUMENT) 1/2" IRON ROD AND METAL CAP OR 1/2" IRON SET IN CONCRETE UNLESS OTHERWISE SHOWN, IN ACCORDANCE WITH CHAPTER 177 OF FLORIDA STATUTES
 - ⊙ SET 1/2" IRON ROD OR 1/2" IRON SET IN CONCRETE UNLESS OTHERWISE SHOWN
 - △ FOUND PPM, STAINLESS STEEL SCREW OR ONE "CONKES L.B. MARK"
 - PPM PERMANENT REFERENCE MONUMENT
 - HWY HIGHWAY
 - R/W RIGHT OF WAY
 - O/R OFFICIAL RECORDS
 - D/E DRAINAGE AND UTILITY EASEMENT
 - DA ORIGINAL DISTANCE
 - DETD DETAIL
 - (M) MEASURED
 - P POINT OF INTERSECTION

NOTES:
1. CORNERS ALONG STRAITS OF FLORIDA NOT SET OUT TO WATER. SEE DETAILS FOR WITNESS CORNERS AND DEL.



NOTICE
THIS PLAT AS RECORDED IN ITS GRAPHIC FORM IS THE OFFICIAL DEPICTION OF THE SUBDIVIDED LANDS DESCRIBED HEREIN AND WILL IN NO CIRCUMSTANCES BE SUPERSEDED IN AUTHORITY BY ANY OTHER GRAPHIC OR DIGITAL FORM OF THIS PLAT. THERE MAY BE ADDITIONAL RESTRICTIONS THAT ARE NOT RECORDED ON THIS PLAT THAT MAY BE FOUND IN THE PUBLIC RECORDS OF THIS COUNTY.